



## 75 Knights Road, Hoo, ME3 9DX

GUIDE PRICE £400,000 - £425,000 Virtual Tour Available.

FANTASTIC SIZE extended semi detached house in the popular semi rural village of Hoo offering 3 DOUBLE BEDROOMS.

MMS are delighted to offer this very generous in size family home offered to the sales market with NO ONWARD CHAIN. The house has been modified to create an impressive amount of ground floor living space and a garage stretching from front to back.

Once entering the property via a convenient spacious porch, the internal hallway offers access to all ground floor rooms. There is a lovely generous size lounge with large bay window situated to the front and a brilliant well proportioned family room in the centre of the house. A well equipped kitchen and dining room, with modern sky lights are all open plan and over looking the rear garden.

There is also a handy cloakroom/WC and internal access to the garage. To the first floor there are three double bedrooms and a family bathroom. There is a large internal cupboard which could be used as a study area or walk in wardrobe.

The rear garden is great for families and entertaining being mostly lawn for easy maintenance.

Additional benefits include gas central heating, double glazed windows and a block paved drive for two cars.

Hoo St Werburgh, commonly known as Hoo, is a large village and civil parish in the Medway district of Kent It is one of several villages on the Hoo Peninsula with many amenities including schools for all ages, shops and bus routes. Call now to book your internal viewing. COUNCIL TAX BAND B

- THREE DOUBLE BEDROOMS
- DRIVE WAY FOR TWO CARS & LARGE GARAGE
- CLOAKROOM/WC
- REAR GARDEN
- EXTENDED ACCOMMODATION
- NO CHAIN
- SEMI RURAL LOCATION
- FAMILY ROOM
- COUNCIL TAX BAND B

**£400,000**



Ground Floor

Approximate total area<sup>(1)</sup>

1664.79 ft<sup>2</sup>  
154.66 m<sup>2</sup>

Reduced headroom

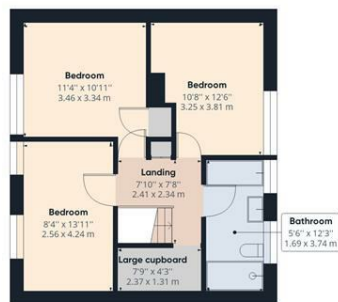
2.07 ft<sup>2</sup>  
0.19 m<sup>2</sup>

(1) Excluding balconies and terraces

Reduced headroom (below 1.5m/4.92ft)

While every attempt has been made to ensure accuracy, all measurements are approximate, not to scale. This floor plan is for illustrative purposes only.

GIRAFFE360



Floor 1

